

CHILD MALTREATMENT 2021 SUMMARY

This infographic presents key data from *Child Maltreatment 2021*, the 32nd edition of the annual report on child abuse and neglect produced by the Children's Bureau within the U.S. Department of Health and Human Services. The report is based on data voluntarily submitted by child welfare agencies through the National Child Abuse and Neglect Data System (NCANDS). NCANDS collects case-level data on all children who received a child protective services response in the form of an investigation or an alternative response. The 2021 national data are based on data from 49 States, the Commonwealth of Puerto Rico, and the District of Columbia. (One State did not report data.)

We encourage you to view the *Child Maltreatment 2021* report on the Children's Bureau website for more information.



3,987,000 REFERRALS ALLEGING MALTREATMENT THAT INCLUDE

7,176,600 children*

**National estimates*

48.5%

were screened out



REFERRALS

51.5%

were screened in

17.8%

VICTIMS

82.2%

NONVICTIMS*

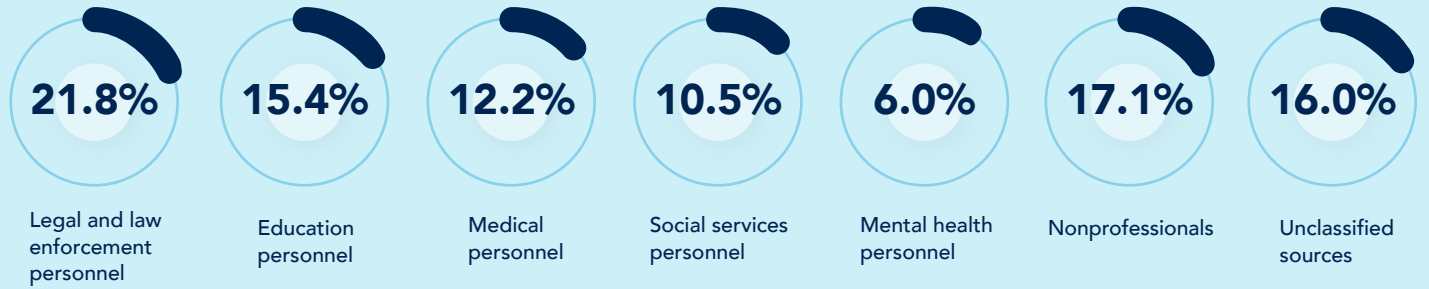


**Including 13.3% of the total who received an alternative response*

VICTIMIZATION RATES PER 1,000 CHILDREN (2017–2021)

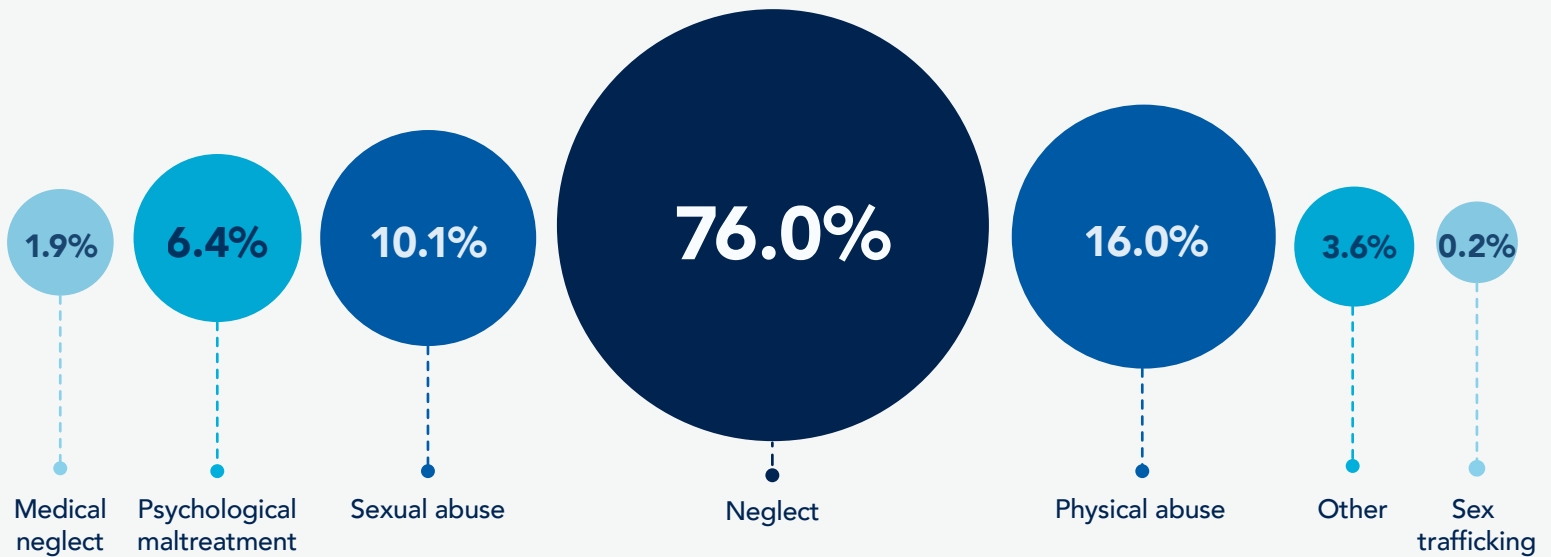


CHILD MALTREATMENT REPORTERS



Note: These data are for screened-in referrals.

TYPES OF MALTREATMENT



Note: A child may be a victim of multiple types of maltreatment. This graphic is not to scale.



27.8% of victims are birth through 2 years old



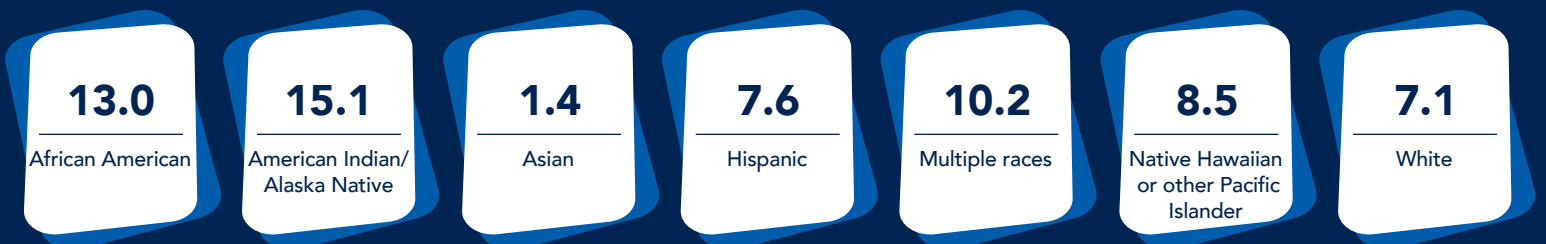
1,820 fatalities due to child maltreatment*

*National estimate

SPECIAL FOCUS

RACIAL AND ETHNIC DISPROPORTIONALITY

Rates of Victimization per 1,000 Children



The rates for African American and American Indian/Alaska Native children are about twice the rates for Hispanic and White children.



Read [Child Maltreatment 2021](#) for more information.

This material may be freely reproduced and distributed. However, when doing so, please credit Child Welfare Information Gateway. This publication is available online at www.childwelfare.gov/pubs/CMSummary21/.